

ENABLE SEAMLESS MANAGEMENT OF FUJITSU SERVER PRIMERGY WITH RED HAT ANSIBLE AUTOMATION

PARTNER SOLUTION BRIEF

“Outages, data breaches and a host of other operational failures are often the result of manual errors. IT teams can leverage automation as a force multiplier, increasing their capacity to get work done. With the availability of agentless tools with rich, multi-vendor ecosystems, there are few excuses for not getting started on the journey to greater levels of automation.”

ERIC HANSELMAN
451 RESEARCH

INTRODUCTION

Many organizations have moved to Red Hat® Enterprise Linux® running on x86-based servers as the compute engine for traditional and cloud-based applications. FUJITSU® Server PRIMERGY® delivers the compute power that customers of all sizes demand to cost-effectively meet evolving business requirements. Fujitsu now offers PRIMERGY Server integration with Red Hat Ansible® Automation to improve the experience with Red Hat Enterprise Linux. This integration provides faster startup time for new servers, improved management, and better visibility into the environment.

SOLUTION AT A GLANCE

Fujitsu has developed a series of playbooks, roles, and workflows that allow the PRIMERGY integrated Remote Management Controller (iRMC) to seamlessly manage and automate operations through Red Hat Ansible Automation. With these capabilities, customers can:

- **Prepare new PRIMERGY Servers.** Configure new systems, reuse previous configurations, and create user profiles.
- **Manage and accelerate processes across the PRIMERGY lifecycle.** Check server health, compare with a desired state, set identical server settings, and upgrade firmware, BIOS, and iRMC.
- **Issue ad hoc commands.** Verify system inventory, power cycle the server, and reboot the system.

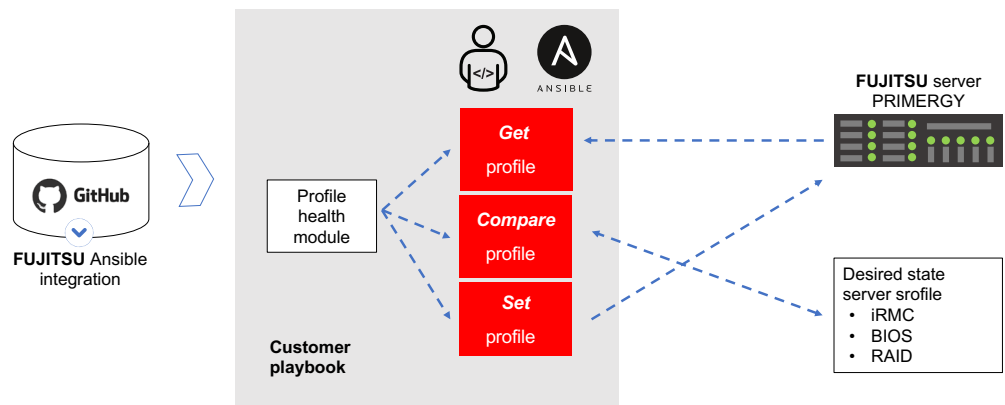
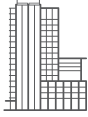


Figure 1. Obtain greater visibility and management using PRIMERGY integration with Ansible.



ABOUT RED HAT

Red Hat is the world's leading provider of open source software solutions, using a community-powered approach to provide reliable and high-performing cloud, Linux, middleware, storage, and virtualization technologies. Red Hat also offers award-winning support, training, and consulting services. As a connective hub in a global network of enterprises, partners, and open source communities, Red Hat helps create relevant, innovative technologies that liberate resources for growth and prepare customers for the future of IT.

RED HAT ANSIBLE

Red Hat Ansible Automation provides a simple, powerful, and agentless framework for network, server, and application automation. It offers a single language for automation across technologies and organizations. Red Hat Ansible helps IT teams manage complex multitier deployments by adding control, knowledge, and delegation to the environments ensuring consistency and compliance. With Red Hat Ansible Automation, customers can add stability, scalability, and repeatability to their management processes. The software supports integration of more than 900 third-party technologies and products using modules developed and released through a vibrant, growing ecosystem.

FUJITSU AND RED HAT STRATEGIC ALIGNMENT

Fujitsu, a Red Hat Global Alliance Partner, works with Red Hat to jointly serve global customers. Fujitsu provides design support, implementation best practices, and a single point of contact for post-sale support. Fujitsu also offers integrated support with a single point of contact for hardware and software issues, simplifying customer support.

CONCLUSION

FUJITSU Server PRIMERGY integration with Red Hat Ansible provides a range of customer benefits, including:

- **Faster time to value.** Prepare new servers by taking advantage of pre-defined profiles.
- **Simplified management.** Automation of repeatable tasks and workflows makes it easier to manage PRIMERGY Servers.
- **Improved visibility.** The Red Hat Ansible Automation dashboard provides views into all aspects of the PRIMERGY Servers.

LEARN MORE

Learn more about Fujitsu and Red Hat joint offerings at <https://fujitsu.redhat-partner.com/resources>. For more information about FUJITSU Server PRIMERGY, please visit: <http://www.fujitsu.com/global/products/computing/servers/primergy/>. To access the modules and playbook of FUJITSU Server PRIMERGY integration with Red Hat Ansible visit: <https://github.com/FujitsuPrimergy/fujitsu-ansible-irmc-integration>.

NORTH AMERICA
1 888 REDHAT1

EUROPE, MIDDLE EAST,
AND AFRICA
00800 7334 2835
europe@redhat.com

ASIA PACIFIC
+65 6490 4200
apac@redhat.com

LATIN AMERICA
+54 11 4329 7300
info-latam@redhat.com



facebook.com/redhatinc
[@redhatnews](https://twitter.com/redhatnews)
linkedin.com/company/red-hat

ABOUT FUJITSU

Fujitsu is the leading Japanese information and communication technology (ICT) company, offering a full range of technology products, solutions, and services. Approximately 140,000 Fujitsu people support customers in more than 100 countries. Fujitsu uses their experience and the power of ICT to shape the future of society with their customers.

Copyright © 2019 Red Hat, Inc. Red Hat, Red Hat Enterprise Linux, the Shadowman logo, and Ansible are trademarks or registered trademarks of Red Hat, Inc. or its subsidiaries in the United States and other countries. Linux® is the registered trademark of Linus Torvalds in the U.S. and other countries

Copyright © 2019 Fujitsu, the Fujitsu logo are trademarks or registered trademarks of Fujitsu Limited in Japan and other countries. PRIMERGY are registered trademarks in Europe and other countries. Other company, product and service names may be trademarks or registered trademarks of their respective owners.