



Red Hat Hardware Certification

Can help you reduce risk, accelerate time to market, and enhance customer satisfaction

Benefits

- Compatibility verification
- Reduced cost and risk
- Ongoing support

Features

- Targets mutual customers
- Ensures interoperability with Red Hat platforms
- Provides proactive engineering and testing

Certification proves reliability and builds trust.

Certifications are essential for business, illustrating success at meeting specific standards in developing and building the enterprise-grade technology products that customers expect. Certifications can also build customer confidence, gain brand trust, and provide partners with a competitive edge.

Trusted by 90% of Fortune 500 companies¹, Red Hat has more than twenty-five years of experience delivering innovative open source solutions. Red Hat® Hardware Certification offers a path to success through certification. The program is built for hybrid cloud—from the datacenter to public clouds to the edge—and is focused on the needs of mutual customers and Red Hat partners.

What is Red Hat Hardware Certification?

Customers who pursue solutions expect that hardware and software shipped together works together and is supported together by both Red Hat and Red Hat partners. Red Hat Hardware Certification is a partner certification for physical and virtual servers, components, and edge devices across Red Hat Enterprise Linux®, Red Hat OpenStack® Platform, and Red Hat OpenShift® Container Platform.

Red Hat Hardware Certification helps mutual customers deploy known compatible hardware for use with Red Hat software products. You can choose to certify hardware systems, physical and virtual servers, components, embedded hardware, compute, network and storage infrastructure, or distributed IT architecture like edge computing and pick from a broad range of components and systems on x86_64, ppc64le, s390x, and aarch64 architectures. All hardware certifications are based on certifications for Red Hat products. Once your chosen hardware certifications are achieved, you can obtain compatibility across Red Hat platforms like Red Hat Enterprise Linux, Red Hat OpenStack Platform, and Red Hat OpenShift Container Platform. The certification establishes cooperative multi-vendor support for certified hardware and the assurance that the deployment is supported.

Red Hat Hardware Certification focuses on providing you with tools and workflows so that mutual customers can choose products with lifecycle management, security, and supportability. The process, which [starts upstream](#) and has varying timelines, requires enablement before certification to make sure that your hardware products function cleanly with Red Hat technology. Red Hat stands with you to help you achieve customer success with certified products by providing joint support of mutual customers and cooperative support in publishing the certification, once achieved.

Benefits of hardware certification

Customers expect applications to run across many hardware devices with Red Hat platforms. Seamless portability, however, requires work.

As more customers move to the open hybrid cloud, Red Hat Hardware Certification verifies that devices successfully deliver workloads and business requirements so that your products with Red Hat platforms are ready for mutual customers. Certification promotes the use of best practices for improved supportability and interoperability, creates value by providing a superior customer experi-



facebook.com/redhatinc
@redhatnews
linkedin.com/company/red-hat

redhat.com

¹ Source: Red Hat client data and [Fortune 500 list](#).

“One of the reasons we’re well positioned to compete in this space is because hardware is diversifying. More function-specific hardware is needed to run certain workloads and types of compute.”

Chris Wright
Senior VP and Chief Technology Officer,
Red Hat

As more customers move to the open hybrid cloud, Red Hat Hardware Certification helps ensure interoperability so that customer workloads and business requirements can be met using Red Hat partner products and Red Hat platforms.

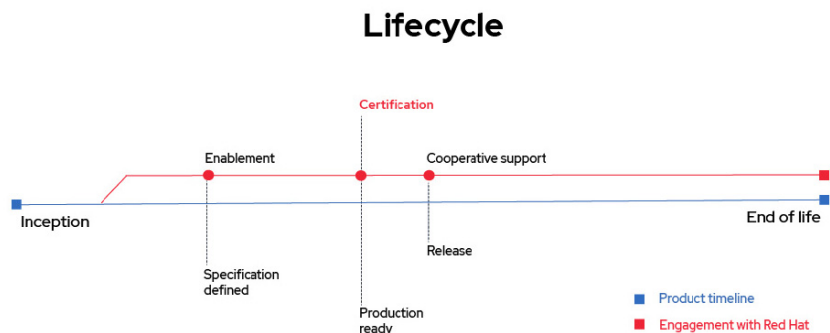
ence, and provides assurance that your products are compatible. Certification also maximizes your testing resource investment by using a holistic approach to the overall hardware product model and the available configurations and a targeted needs-based testing and assessment procedure.

Red Hat Hardware Certification reduces your risk and cost by better managing the time and effort, tasks, and resources associated with installing, upgrading, securing, configuring, and maintaining server software, and training personnel.² The certification carries forward through-out minor releases of a major release. You can discover issues before the customer and become better prepared to answer questions. Red Hat is responsible for maintaining the software components that enable the certified hardware, reducing support incidences and associated costs and boosting your ROI. You receive no-cost Red Hat hardware certification and no-cost training, software, development subscriptions, support, and partner engineering through Red Hat Partner Connect. This helps you attract new customers that seek to avoid risk through certification.

Red Hat Hardware Certification provides access to Red Hat technical support and a certified ecosystem. You receive proactive support, not just a hardware test. Red Hat works with you throughout the certification process and beyond. You gain industry certification often used by purchasing and to meet various government requirements. You also get access to a large ecosystem of software applications that are certified on the Red Hat Enterprise Linux, Red Hat OpenStack, or Red Hat OpenShift platforms.

What is the Red Hat certification process?

Red Hat Hardware Certification provides an easy-to-use, flexible, and consistent certification workflow, lowering the learning curve so you can start certifying hardware products immediately upon general availability for all new versions of Red Hat products without needing to re-certify. Certification includes training to provide the technical skills necessary for successful partner certifications and provides a simple, repeatable workflow as shown below.



² “Guide to General Server Security”, The National Institute of Standards and Technology, United States Department of Commerce, Special Publication 800-123.



Any workload on any footprint—that’s the Red Hat hybrid cloud vision. 100% of this vision runs on hardware.

Red Hat Hardware Certification is a simplified process that begins with an assessment. The [hardware certification pre-assessment](#) checks your readiness, examines compliance and policies, and determines the next steps in the certification process. The process educates you about [prerequisites](#), creates your hardware certification, prepares you to test your environment, and tests your hardware.

Red Hat Hardware Certification has a few requirements that each certification must meet. You need to give a unique name and a complete and public specification for each hardware model. You must provide a clean install of the general availability release Red Hat product, not updated, modified, or augmented, and you must supply production-level hardware during testing and a sample after certification.

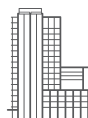
Red Hat Hardware Certification complements your quality control work and expedites your time to market. You can improve stability and reliability by more quickly identifying customer experience issues. Ecosystem Partner Management (EPM) offers proactive engineering and testing to build confidence and you can join the certified hardware ecosystems catalog with your product, once you have completed your certification.

Resources

- View the [hardware certification journey](#).
- Read the [Red Hat Hardware Certification agreement](#).
- Read the [Red Hat Enterprise Linux Software Certification 8.51 Quick Start Guide, Policy Guide, Workflow Guide](#).
- Read the [Red Hat OpenStack \(RHOSP\) Policy Guide and Workflow Guide for Plug-in Certification, Application Certification, and Bare Metal Certification](#).
- Access the [Red Hat Ecosystem](#) or the [Ecosystem Catalog](#).
- [Complete an application](#) to learn more about Red Hat Hardware Certification.

About Red Hat

Red Hat is the world’s leading provider of enterprise open source software solutions, using a community-powered approach to deliver reliable and high-performing Linux, hybrid cloud, container, and Kubernetes technologies. Red Hat helps customers integrate new and existing IT applications, develop cloud-native applications, standardize on our industry-leading operating system, and automate, secure, and manage complex environments. [A trusted adviser to the Fortune 500](#), Red Hat provides [award-winning](#) support, training, and consulting services that bring the benefits of open innovation to any industry. Red Hat is a connective hub in a global network of enterprises, partners, and communities, helping organizations grow, transform, and prepare for the digital future.



facebook.com/redhatinc
@redhat
linkedin.com/company/red-hat

North America
1 888 REDHAT1
www.redhat.com

**Europe, Middle East,
and Africa**
00800 7334 2835
europe@redhat.com

Asia Pacific
+65 6490 4200
apac@redhat.com

Latin America
+54 11 4329 7300
info-latam@redhat.com