



Red Hat



# Revolutionize Your Cloud Resource Management with Integra's Automated Hybrid Cloud Resource Management Solution

## Take the time and complexity out of managing hybrid cloud

In the rapidly evolving landscape of cloud-based workloads, it's crucial to adapt and streamline your approach to cloud maintenance. Integra presents a cutting-edge solution – Integra's Automated Hybrid Cloud Resource Management (HCRM) solution – designed to simplify and optimize your cloud resource management processes.

## Challenges in Cloud Resource Management

As cloud adoption skyrockets, with over 75% of organizations in India migrating their infrastructure and applications to the cloud, the complexity of managing these environments also increases. Many IT teams are grappling with outdated, manual maintenance processes, leading to significant costs and time investments. Inadequate cloud resource management can result in various issues, such as service unavailability, connection timeouts, and delayed requests, impacting an organization's reputation, profitability, and overall user experience.

## Discover the Integra Advantage

Integra's HCRM, built on the robust Red Hat Ansible Automation Platform, redefines cloud resource management by taking charge of day-to-day operations and maintenance.

Here's why it stands out:

- **Unified Integration** – HCRM seamlessly brings together disparate cloud environments and systems, including Elasticsearch, LDAP, SMTP, Git, and hybrid cloud endpoint devices. This integration spans public cloud, private cloud, and on-premises environments.
- **Time Efficiency** – Automated and streamlined processes eliminate the need for specialist resource technicians, allowing your IT team to focus on strategic tasks.
- **Intelligent Insights** – Leverage AI and machine learning capabilities for crucial data insights, such as usage patterns, server demand spikes, and region-based access. Predict high-traffic periods and scale resource allocation accordingly.
- **Minimal Downtime** – Real-time insights empower you to ensure uninterrupted environment operations, enhancing user experience and preserving your business's reputation.



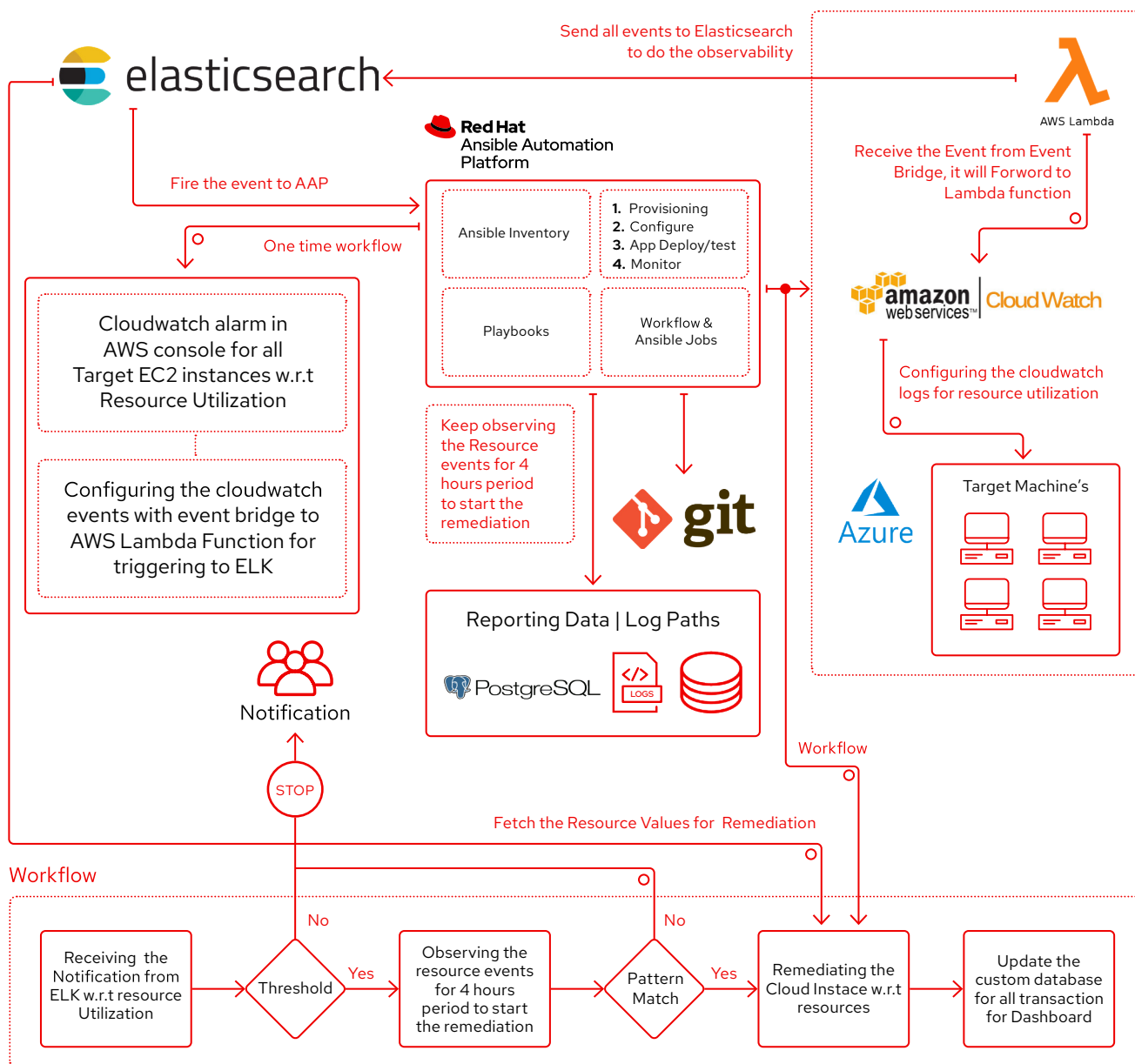
Red Hat



- **Security and Compliance** – Benefit from automated security and compliance updates, ensuring robust and continual protection against cyber threats.
- **Cost Optimization** – By streamlining routine tasks, Integra's HCRM enhances the efficiency and productivity of your IT team, reducing the risk of costly interruptions.

In a world where cloud management demands agility, security, and efficiency, Integra's Automated HCRM Solution stands as your partner for a seamless, secure, and cost-effective cloud resource management experience. Elevate your cloud journey with Integra's innovation.

## Transform your cloud management. Transform with Integra.

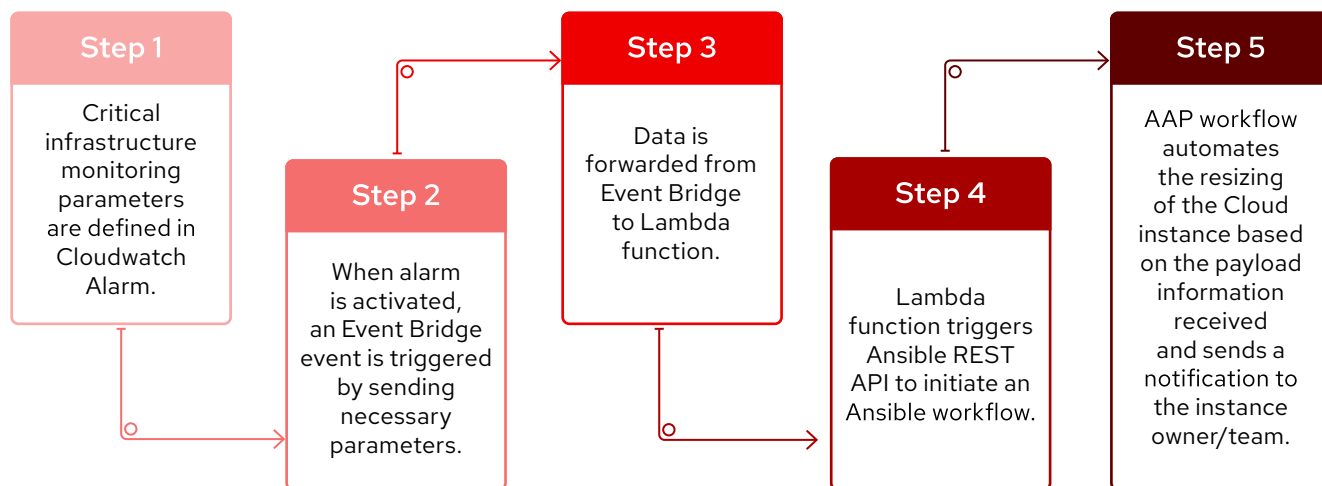




Red Hat

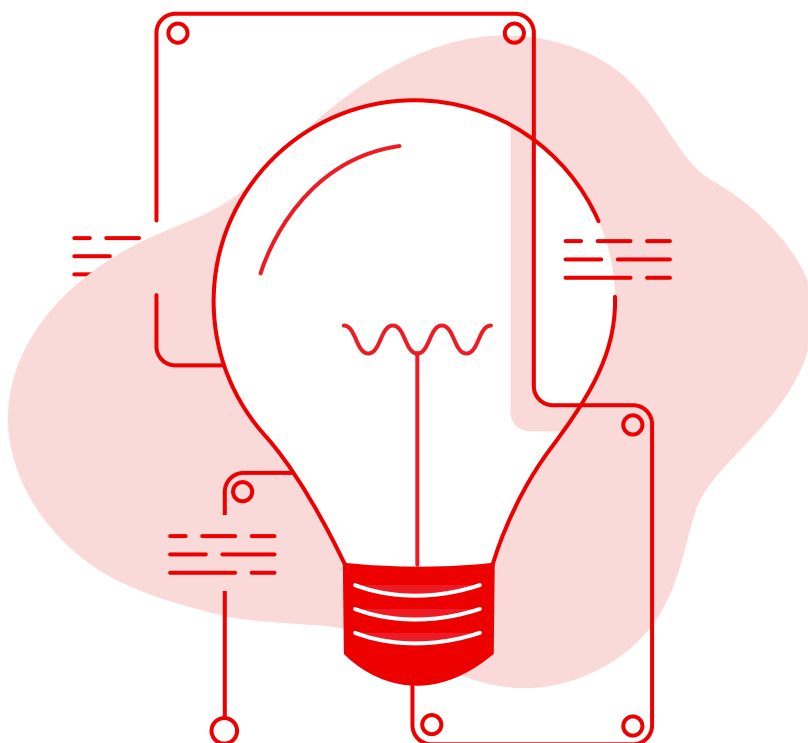


## Monitors and maintains your cloud infrastructure at every step



# 20%

Proven to reduce cloud maintenance costs by 20%.





# Red Hat



## Why choose Integra?

For over four decades, the team at Integra has been providing IT services to organisations in India and abroad. We have built more than 150 use cases with the Red Hat Ansible Automation Platform, and 20 with Red Hat OpenShift. Our team includes over 100 expert technical consultants who deliver best-in-class Red Hat solutions to our customers. We also have an in-house Red Hat CoE lab where we initiate and build our solutions, in close collaboration with our customers.

## How we helped a leading automotive manufacturer

Integra recently implemented a market-leading end-to-end automation platform for one of the country's largest automotive providers. This solution helped the manufacturer optimise their cloud resource allocation, automate tasks and gain real-time insights into cloud usage. The organisation reduced its cloud costs by close to 20% and improved process performance by close to 15% due to the solution.

### Technology used

- Red Hat Ansible Automation Platform
- Red Hat Enterprise Linux

### Key benefits

- Time and cost savings
- Enhanced security and compliance
- Data-led insights for enhanced decision-making

Integra is proud to be a Red Hat Premier Business Partner.



## Red Hat

Premier

Business Partner

f [facebook.com/redhatinc](https://facebook.com/redhatinc)

t [@RedHat](https://twitter.com/RedHat)

in [linkedin.com/company/red-hat](https://linkedin.com/company/red-hat)

#### About Red Hat

Red Hat helps customers standardise across environments, develop cloud-native applications, and integrate, automate, secure, and manage complex environments with award-winning support, training, and consulting services.

**North America**  
1-888-REDHAT1  
[www.redhat.com](https://www.redhat.com)

**Europe,  
Middle East,  
and Africa**  
00800 7334 2835  
[europe@redhat.com](mailto:europe@redhat.com)

**Asia Pacific**  
+65 6490 4200  
[apac@redhat.com](mailto:apac@redhat.com)

**Latin America**  
+54 11 4329 7300  
[info-latam@redhat.com](mailto:info-latam@redhat.com)